

# How we'll support ewe

A guide to Student Services



Student  
Services

# Information and advice to applicants with disabilities

At the Royal Agricultural University, many students have declared a disability.

We're committed to making reasonable adjustments and addressing individual support requirements to make sure that you're able to participate fully and enjoy a fulfilling university experience.

All applications are assessed purely on academic merit and potential.

The University views applications from disabled students on the same grounds as those from other candidates.

The term disability covers many things, but in particular, this can include dyslexia, dyspraxia, ADHD, autism and mental health challenges.

We hope that the information and advice contained in this leaflet will help you to understand the support that is on offer from the University and also how to access it.

If you have any questions or need individual advice, we would love to hear from you!

We want to ensure that you have all the information that you need before starting your course.

Best wishes,

The Student Services Team

## Telling us about your disability

Any disability disclosure you make will be dealt with confidentially and sensitively. If you tell us about the impact of your disability, we can discuss appropriate support. Adjustments can be made and support requirements taken into consideration to enable you to best demonstrate your abilities and achievements when you start your studies.

In order to provide study support, we may need to share some information about your needs. Information will only be shared with your explicit consent on a need-to-know basis with relevant people, such as the lecturers and tutors who will teach you and relevant library and support staff. The information provided is also used to monitor rates of participation in Higher Education by particular groups of people, which is a statutory requirement; it does not form part of any assessment of your application.

## Tip: Apply for reasonable adjustments before you arrive

The support systems for disabled students at university may be different from those that you have experienced at your previous school or college. There are often more choices that you are able to make, but this means that you may also need to take some actions to get the support you need.

Study support in the form of reasonable adjustments to your teaching and learning is something that the Student Services team can help put in place for you. Some students will have had reasonable adjustments at school, including extra time or alternative exam arrangements, but if you haven't, don't let this put you off asking. We may be able to offer things that you have not had in the past.

Here are some examples of the types of reasonable adjustments that we may be able to put in place:

- Extra time, rest breaks or separate rooms for timed exams.
- Alternatives to group work or presentations.
- Flexibility around assignment deadlines.
- Alternative formats of text-based resources and teaching resources.
- Adjustments to any field trips you may need to attend.
- Access to 1:1 study support and assistive technology that RAU holds.



## How do I apply for reasonable adjustments?

You can apply for reasonable adjustments by letting us know what you think you need and by sending us any evidence/information that you have about your disability, medical condition or specific learning difficulty. This could be letters or reports from your GP or other health professional, or school reports that you may have had in the case of dyslexia or other specific learning difficulties. Send us what you have. We often can accept a broader range of evidence than Student Finance England if you are also applying for Disabled Students Allowances (DSA) funding, as outlined below.

If you are not sure and need advice, please get in touch and we can arrange to speak to you.

# Funding for disabled students – Disabled Students Allowances (DSA)

UK students may be eligible for the Disabled Students' Allowances (DSA) if they have appropriate evidence of a disability. We encourage all students to consider applying for Disabled Students Allowances so that they have access to all the support they may need whilst studying.

Disabled Students' Allowances (DSAs) fund one-to-one support, such as study skills tuition or specialist mentoring, specialist equipment, software, and travel costs.

The support you receive will be tailored to your study-related needs. Typical forms of support include:

- Non-medical helper support such as one-to-one study skills tuition, specialist mentors, communication support workers, British Sign Language (BSL) interpreters and specialist note takers.
- Specialist equipment and assistive software such as computers, printer scanners, digital voice recorders, text-to-speech software, speech-to-text software, mind mapping software, and ergonomic furniture such as desks and chairs for study.
- Travel support, such as funding for a taxi from your term-time address to the university.
- A general allowance for purchasing printing consumables such as ink and printer paper.

To find out more about the DSA, please visit the following links:

**Information on the government webpages:**

<https://www.gov.uk/disabled-students-allowance-dsa>

**Advice and guidance published by UCAS:**

<https://www.ucas.com/money-and-student-life/money/additional-funding/disabled-students-allowance-dsa>

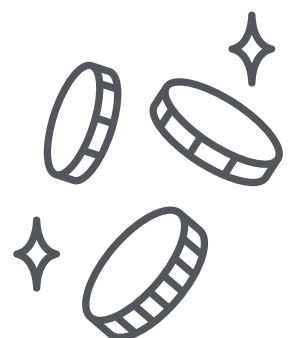
**You apply for DSA funding via your funding body.** Your funding body is either who you have core financial support from (such as student loans) or it is based on where your home address is. Please see links below:

**England:** [www.gov.uk/disabled-students-allowances-dsas](http://www.gov.uk/disabled-students-allowances-dsas)

**Northern Ireland:** [www.studentfinancenir.co.uk](http://www.studentfinancenir.co.uk)

**Wales:** [www.studentfinancewales.co.uk](http://www.studentfinancewales.co.uk)

**Scotland:** [www.saas.gov.uk](http://www.saas.gov.uk)



## Funding for disabled students – Disabled Students Allowances (DSA) (Cont.)

It can take several months from the point of application before full support is implemented, so the earlier you apply, the better. You can apply before you start your course, even if you do not have a firm offer from the university.

Non-UK students are not usually eligible for DSA. However, the University will always try to provide a similar level of disability-related study support for non-UK students, where there is an assessed need.

If you need any help or advice about DSA funding, do feel free to get in touch with us. We are happy to help you with the process before you arrive.

## Mental Health and Wellbeing Support:

In terms of mental health support specifically, we also have a team of Wellbeing and Mental Health Advisers who you would be able to access once you become a student. Likewise, as an RAU student, you would be welcome to access the Student Assistance Programme which includes 24-hour support and professional counselling delivered by our partners, Health Assured. This highly confidential service is available 365 days a year via phone or mobile app.

It is also worth making sure that you register with a GP surgery in time for your arrival so that you can continue to access mental health support and medication via the NHS. More information about how to do this is here:

<https://www.nhs.uk/nhs-services/gps/how-to-register-with-a-gp-surgery/>

If you need any help or advice on moving your package of care, please do get in touch.

## Need further information or advice? Get in touch!

If you would like any further information or advice, or if you have questions that we have not been able to answer, please do get in touch. We may be able to help over email or we may arrange an appointment with you over the phone or via a video call.

**Visit our webpage:** <https://www.rau.ac.uk/student-life/support-and-wellbeing/support-wellbeing-and-counselling>

**Send us an email:** [StudentServices@rau.ac.uk](mailto:StudentServices@rau.ac.uk)

**Follow us on Instagram!** @raustudentservices